

# 多功能移动地质实验室

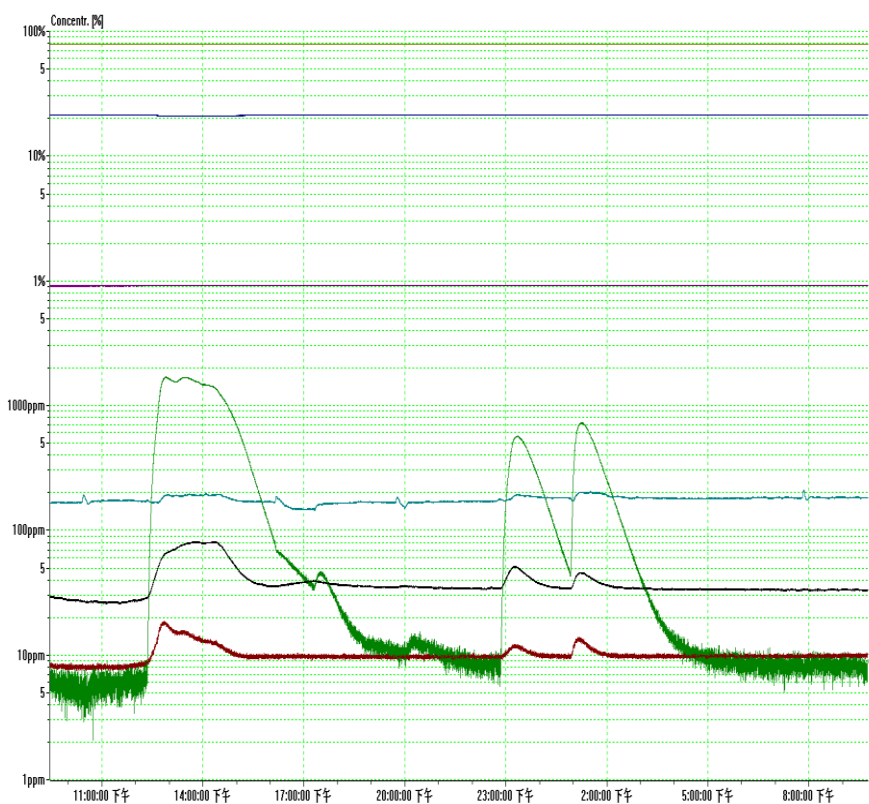
## Multi-functional Mobile Geological Laboratory

### (一) 野外现场分析平台

一种多功能可移动式地质实验室。根据野外地质工作特点设计，移动实验室设有可移动式标准化箱体，多功能分析仪器设备，样品前处理设备，气体连接管路和社会化物流挂车。实验室能满足野外地质现场多组分快速检测需要，把分析测试工作推进到野外地质工作一线。

### (二) 多功能分析能力

多功能分析仪器集约分布在实验室内的机柜上，机柜经过专门设计制造，野外现场分析测试时能便于进行仪器设备的校准和维护以及气路的连接，保证了现场分析实验室的简洁、美观。到达野外地质现场后，经过简单安装、固定，连接现场待测样品和电源，预热并稳定实验室内的仪器设备后，可快速、便捷地进行野外现场分析测试，满足现代地质勘探对气体、液体、固体地球化学监测的要求。在线分析气体中的 Ar、CH<sub>4</sub>、H<sub>2</sub>、CO<sub>2</sub>、He、Rn、Hg、N<sub>2</sub> 和 O<sub>2</sub> 等组分方法。现场分析液体中的 Li、K 等组分方法。现场快速分析固体中的 Cu、Fe、Zn 等成矿元素方法。



### (一) Field analytical platform

A kind of multi-functional mobile geological laboratory was designed. Based on the characteristics of field geological work, the geological laboratory is equipped with mobile standardized container, multi-functional analytical instruments, sample pretreatment equipment, gas connection line and logistics trailer. The mobile geological laboratory could meet the on-site needs of the rapid multi-component detection, push analytical work to the field.

### (二) Multi-functional analytical ability

The Multi-functional analytical instruments and equipment are fixed in cabinets, which was specially designed and manufactured, and could be convenient for calibration and maintenance of instruments and equipment, connection of gas line, ultimately to ensure the analytical laboratory is simple and clear. After Arrived at the field, by the simple installation and fixed, the connection of sample and power supply, the preheating and stability of the laboratory instruments and equipment, the field analytical work could be quickly and conveniently started, which could meet the modern geological requirement for gas, liquid and solid geochemical monitoring. On-line determination of Ar, CH<sub>4</sub>, H<sub>2</sub>, CO<sub>2</sub>, He, Rn, Hg and other components in the gas. The field determination of Li and K in liquid sample. On-site rapid determination of Cu, Fe, Zn and other ore-forming elements in solid sample.

