



NIGER AND ITS MINING SECTOR



SEKOU ABOUBACAR HASSOUMI
Chief of Staff
Ministry of Mines/Niger Republic

CHINA MINING 2017

**BP: 11700, Niamey
Niger**



SUMMARY

I. INTRODUCTION

II. CURRENT SITUATION

III. PERSPECTIVES

IV. CONCLUSION



I. INTRODUCTION



- Located in West Africa
- Surface area: 1,267,000 sq. km
- Eight Regions
- Capital: Niamey
- Population: 17.1 million
- A relatively flat country with its highest peak at 1,944 m (Mt Greboun)
- Climate: Semi-arid tropical with a dry season (October to May) and a wet season (June to September).



I. INTRODUCTION

Uranium

- Niger is the world's fourth largest uranium producer (4,000tu/year)
- Uranium accounts for at least 70% of the country's exports
- However, it contributes to less than 10% of GDP.

Other substances mined or available include:

- gold, tin, gypsum, coal, phosphates, copper, limestone, precious stones and metals

Uranium, coal and gold are mined industrially

Artisanal and Small-scale gold mining (ASM) is practiced in three regions (Tillaberi, Agadez and Maradi).

Industrial mines employ 4,000 people, while ASM involves more than 500,000.

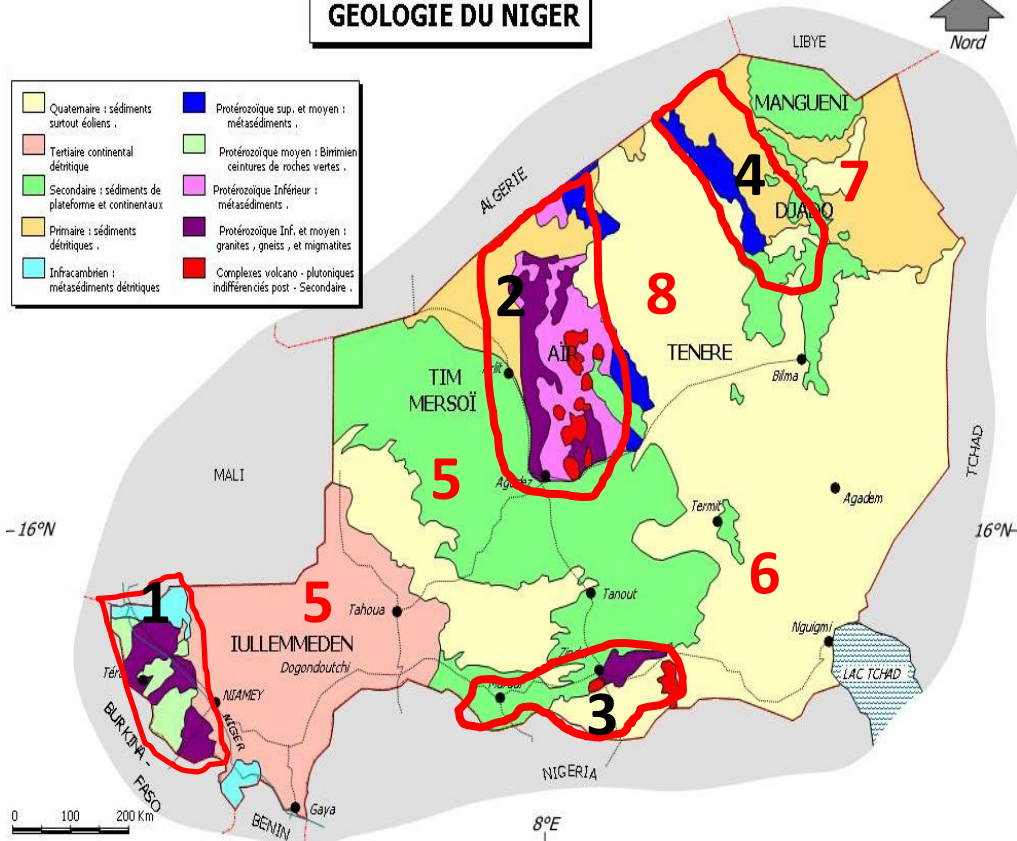


II. CURRENT SITUATION

Geological Settings



GEOLOGIE DU NIGER



Basement domains:

1. Liptako Gourma, (NE of West African craton)
2. Air Mountains in the North of Niger
3. Damagaram Mounio and Maradi South in the Central South of Niger
4. Djado in the NE of Niger

Sedimentary basins :

5. Iullemmeden basin:
 - Tim Mersoï basin in the North
 - Ader Doutchi basin in the SW
6. Chad basin in the East
7. Djado basin
8. Ténéré basin



Diversified mineral Portofolio

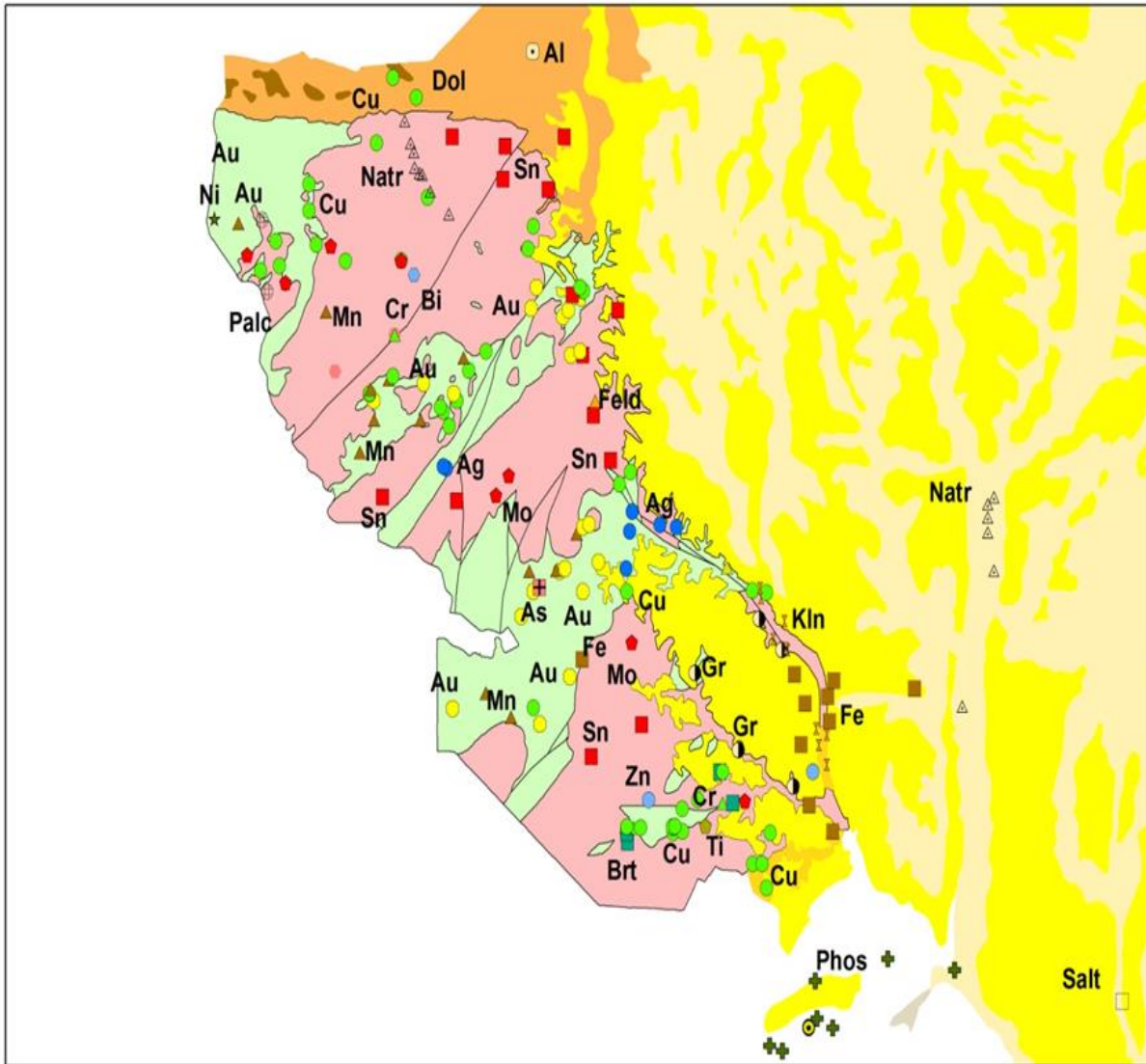
Niger's mineral potential is linked to the following geological formations:

- **the crystalline, granitic and metamorphic basements**
- **the sedimentary rocks at different marine and continental episodes located in the basins**

The granitic and metamorphic basement formations occupy 10% of the national territory while the sedimentary rocks cover 90% Niger's surface.



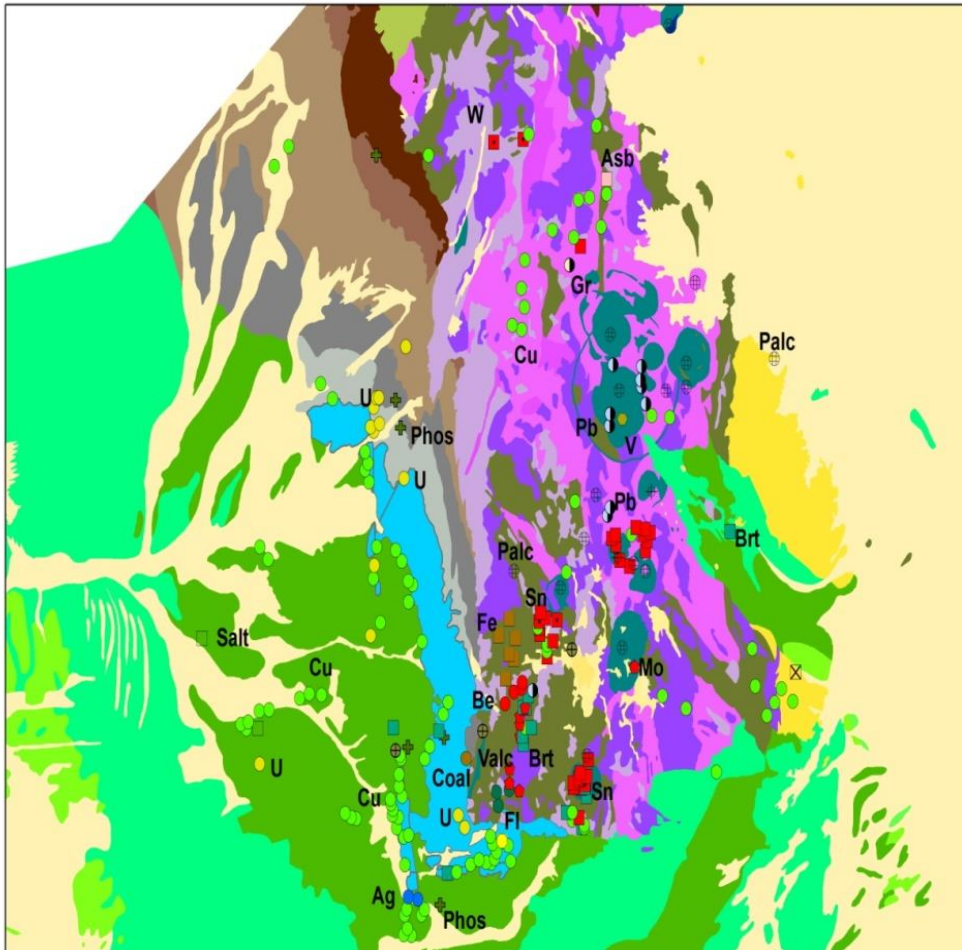
Mineral Potential of Liptako (1)



- Gold
- Silver
- Platinum
- Nickel
- Lithium
- Lead
- Zinc
- Copper
- Molybdenum
- Manganese
- Vanadium
- Chrome

BP: 11700, Niamey
Niger

Mineral Potential of Air Shield and its Western border (Tim Mersoï Basin) (2)



- Coal
- Uranium
- Tin
- Colombo – tantalite
- Gold
- Copper
- Iron
- Vanadium
- Wolframite
- Titanium
- Salt

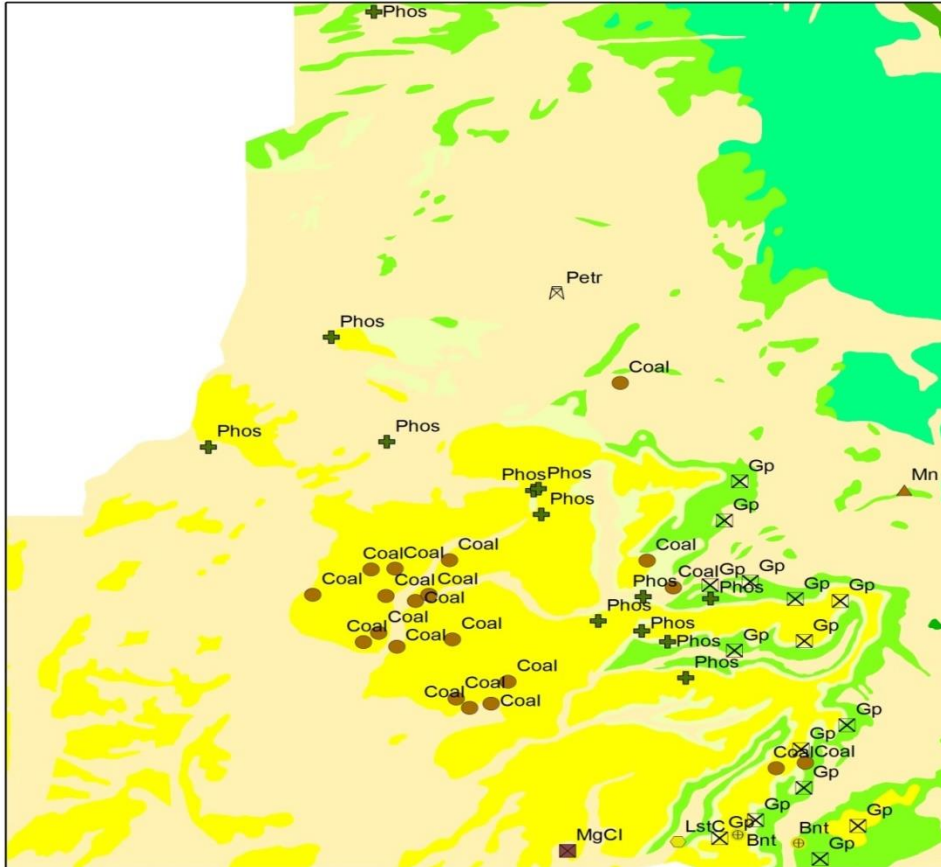
Mineral Potential of Damagaram-Mounio and South-Maradi (3)



- Gold
- Silver
- Copper
- Lead
- Zinc
- Precious metals and stones



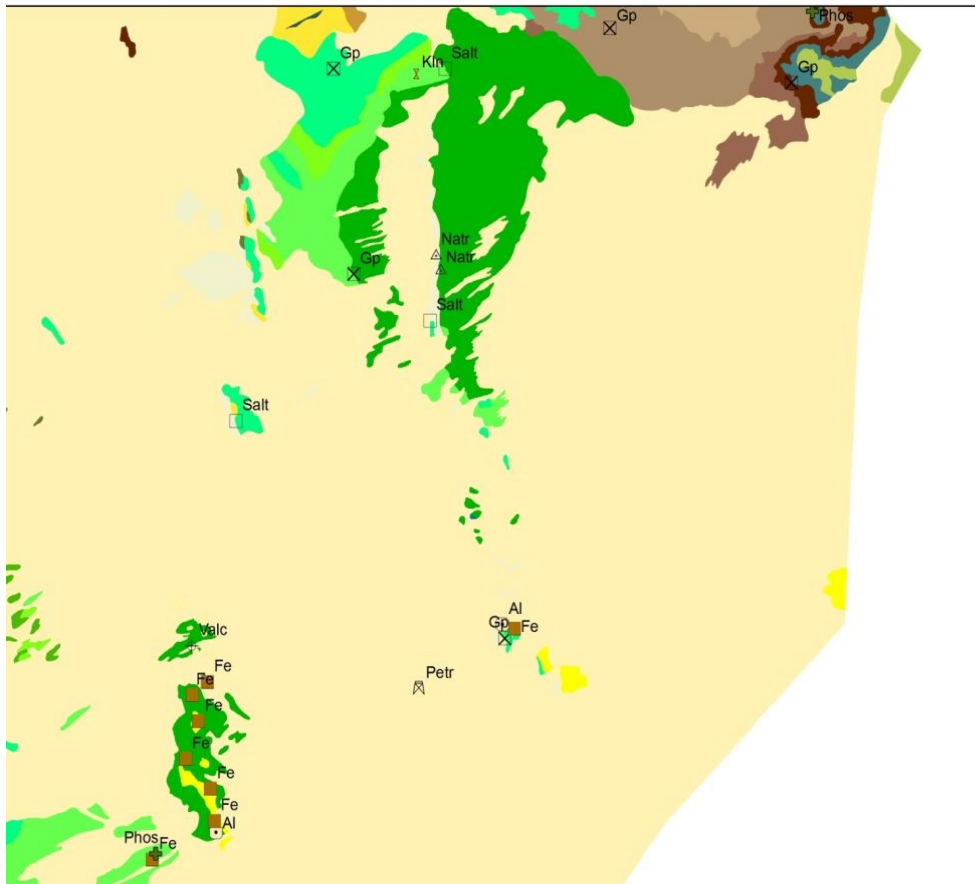
Mineral Potential of Ader Doutchi(4)



- Phosphate
- Gypsum
- Limestone
- Bentonite
- Coal
- Manganese
- Oil

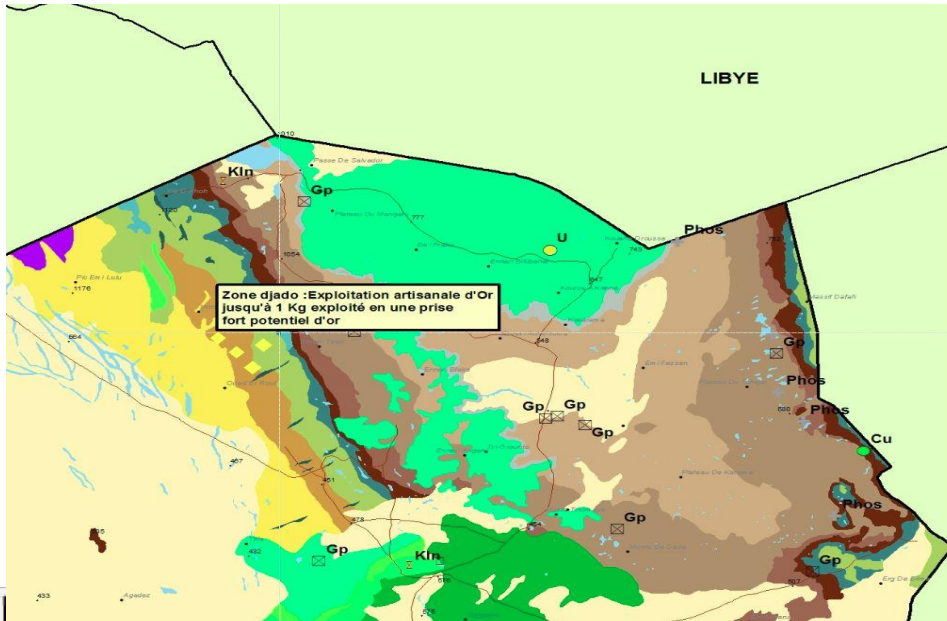


Mineral Potential of Lake Chad Basin (5)



- Oil
- Iron
- Phosphate
- Gypsum
- Aluminium
- Salt
- Natron

Mineral Potential of Jado (6)



- Site discovered in April 2014
- Location: 1000 km from Agadez
- Surface Area: 3000 km²
- 30,000 Artisanal and small scale gold miners from Niger, Chad, Sudan, Burkina Faso and Libya
- Some nuggets



RESERVES / PRODUCTION (1)

1. Uranium

- Reserves: 480,000 tu
- Operating mines: 3
- Production: 4,200 tu/year

2. Coal

- Reserves: 75,000,000 tons
- Operating mine: 1
- Production: 250,000 t/year

3. Gold

- Reserves: 32 tons
- Operating mine: 1
- ASM: 22
- Production: 1,142 kg/year

4. Gypsum and limestone

- Reserves: not assessed
- Operating cement plant: 1
- Production: 45,000 t/year



RESERVES / PRODUCTIONS (2)

5. Iron

- Reserves: 1.2 billion tons in Say-Kollo and 8 billion tons in Termit area

6. Phosphate

- Reserves: 1.255 billion tons at 23% P₂O₅ grade

7. Salt

- Resources: more than 6 billion m³ at 32g/l Saumur
- Production: artisanal

8. Industrial minerals

- Copper, silver, tin, zinc, marble and Cipolin

9. Building materials:

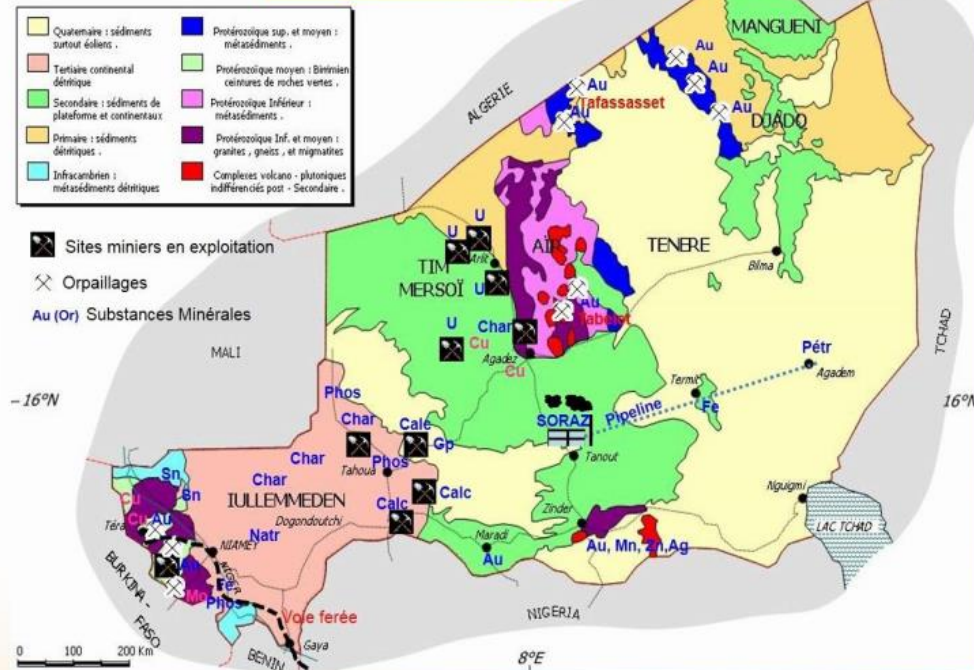
- Granite, sand, gravel



CURRENT MINING AND EXPLORATION



MINISTRY OF MINES
Mining Resources of Niger



09 CREATING SUSTAINABLE VALUE IN NIGER
Keynotes for Foreign Mining Investors

CREATE VALUE NIGER

BP: 11700, Niamey Niger

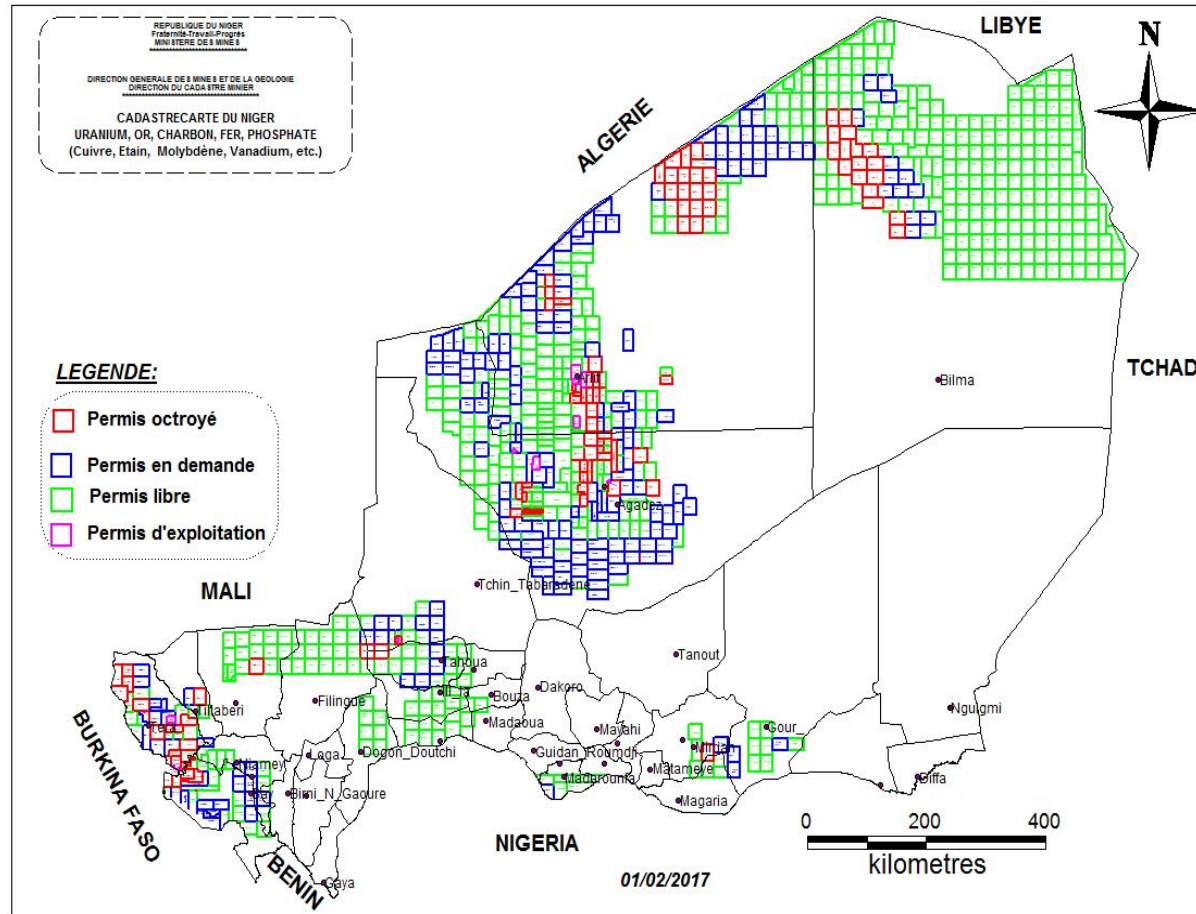


Mining licences, authorisations and agreements attributed yearly since 2012

Year	Exploration Permits Granted	Artisanal and Small Scale Authorizations	Quarry Authorizations	Commercialization Agreements
2012	4	7	28	19
2013	16	3	13	15
2014	11	4	10	16
2015	22	23	18	35
2016	32	26	19	55
2017 (August)	13	22	20	09



About our Mining Cadastre



Blocks:

- **Granted: 90**
- **Applications: 188**
- **Open: 568**
- **Operating mine: 09**

**BP: 11700, Niamey
Niger**



III. PERSPECTIVES

- Diversification of partners and mineral exploitation
- Forecast uranium production increase from 4,000 to 10,000 tu by 2021
- On-going exploration programs
- Open new coal mine (600 MW/year)
- Application of new regulations related to artisanal and small scale mining (adopted July 2017)



III. PERSPECTIVES

- Review of Mining Code
- Adoption of Niger Mining Policy
- Development of industrial minerals, building materials and gemstones



IV. CONCLUSION

- Niger Republic joined the Extractive Industries Transparency Initiative (EITI) in 2005 and was admitted as a candidate country in 2007.

In March 2011, Niger was the first Francophone West African Country to be declared EITI compliant. This shows the Government's commitment to managing the mining sector in accordance with international best practice and in a transparent and accountable way.

- Niger has also sought to address ASM by creating a specific Directorate, DEMPEC – Directorate of Small Scale Mining and Quarries



IV. CONCLUSION

The Government of Niger welcomes mining investment and can offer:

- rich and varied mineral potential
- favourable legal framework
- long experience in mining sector management
- political, economic and social stability

THANK YOU FOR YOUR ATTENTION

